



OPTIMA
Projects

ABOUT US

WHAT WE DO



Optima project consists of a dedicated team of designers and project managers who understand the logistics involved in high-end residential projects. The company has over 27 years' experience in kitchens and fine cabinetry design and manufacture.

The company consists of Stefan Marais who has an in depth understanding of design and manufacture and creating a finished product that is in line with the contractor / developers/ architect's vision as well as working within budget.

Hercules "Herkie" Sandenbergh has 18 years' experience in project management and is a professional engineer who ensures projects run on time and that there is continuous communication with clients throughout the process. Optima projects have created their own project management tool the OST or Optima Slider Tool, which assist clients to understand the various stages and what will be done when ensuring a handover which is on time and perfectly created.

Dustint lab ipis estem quodis voluptem sendunt ibusciet asperro et ratemperum enisque cusanimpor a comni dolorep ratur, sunte del isquiatium fugit quas ulliquas reperis sunti sum estiae eaquodit rendios apisque commolum quundem et officii ut ex explate volorerese eos endiatem acepudae restibus ipsam quam aspelic to eaquia nis esequat harum exerion estest, in porposapite ma vellantio ea sam rehendessus sam, quibus eatio. Tur? Quis as sinventi secuptatur, cumquias soluptatur? Quis ducidit et qui odiscillecto tem quam re cullandam, sinvell oreputant quia de nectet fuga. Cesequam fugit vollicimus, ut odi adis de voloreicab id

Dustint lab ipis estem quodis voluptem sendunt ibusciet asperro et ratemperum enisque cusanimpor a comni dolorep ratur, sunte del isquiatium fugit quas ulliquas reperis sunti sum estiae eaquodit rendios apisque commolum quundem et officii ut ex explate volorerese eos endiatem acepudae restibus ipsam quam aspelic to eaquia nis esequat harum exerion estest, in porposapite ma vellantio ea sam rehendessus sam, quibus eatio. Tur? Quis as sinventi secuptatur, cumquias soluptatur? Quis ducidit et qui odiscillecto tem quam re cullandam, sinvell oreputant quia de nectet fuga. Cesequam fugit vollicimus, ut odi adis de voloreicab id



WHY OPTIMA PROJECTS?

We have a clear understanding of high worth residential developments. We understand the processes involved with these complex projects. We understand the intricacies of project management with large scale projects.

OPTIMA PROJECTS IS A PROUD MEMBER OF THE KSA

The mission of the KSA is to create a professional and stable trading environment in which the industry can prosper and consumers can enjoy peace-of-mind. As a national association the KSA looks to represent the country's reputable kitchen manufacturers and associated suppliers with a view to facilitating solution-driven resolutions between members and consumers and facilitate growth and education within the industry.



SPECIALISTS

Optima Projects specialises in highend cabinetry covering the following areas:

Kitchens

BIC's

Vanities

Bars

Custom internal cabinetry





Evocative architecture, intelligent interiors. A space that connects with its community, reflects its residents and redefines the urban living experience. Once in a while a building comes along that captures the spirit of a neighbourhood, echoes the ethos of its community and challenges everything we know about residential architecture. Design is more than just the materials used to create a magnificent space, it's an understanding of how they work together to deliver a masterpiece.



ANYTHING BUT A CONCRETE JUNGLE.

Create an inspiring work environment for your business in our commercial spaces. Enjoy a lunch break of a different kind by stepping out into the peaceful gardens. Everything is on the menu with our wide variety of meals to choose from at restaurants, delis and cafes. Make your guests' business trips memorable without ever having to leave the Square. And take the stress out of travelling by making use of the Gautrain station and the rapid bus route. Gym and Spa facilities will complete and complement this 360° lifestyle offering.



RESIDENTIAL OPTIONS: CLUSTERS

Origin
BY STEPH CITY

Origin City Properties Pty 2 (Pty) Ltd
Origin City Properties Pty 2 (Pty) Ltd

SITE PLAN



RESIDENTIAL OPTIONS: clusters

Clusters include both three and four bedroom options that have an average size of 350 m² with outside patios on stands varying in size from 400m² to 600m². All bedrooms (not just the master suite) are large enough to incorporate a king sized bed and are all en-suite. A village feel has again been adopted with no boundary walls between residences. Instead, planting provides natural screening and privacy and allows each cluster to open onto a garden.

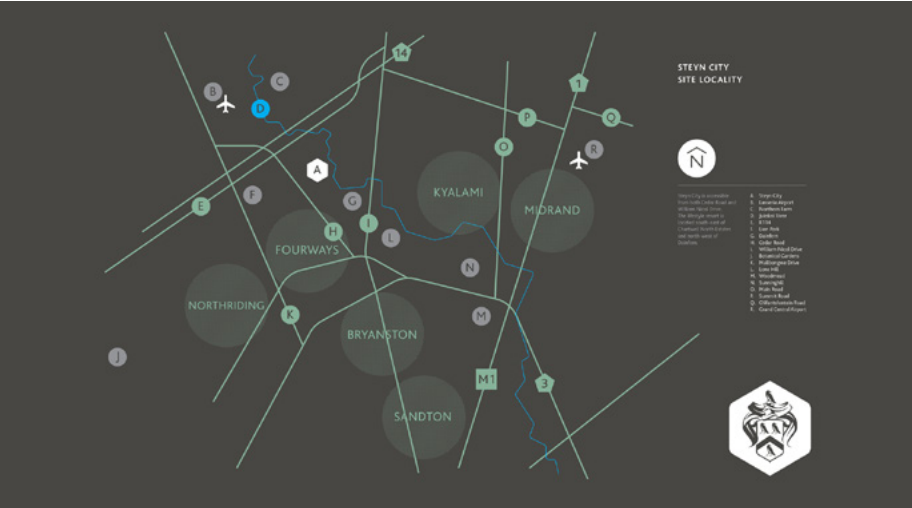


The facilities here include a beautiful resort-style swimming pool with adjacent lawns and a children's play zone. The Deli, situated next to the pool, is a great food stop and meeting point. The parkland framing this recreational area is formed by a stand of 2m bush willow trees, seeded by Madiba himself. An emotive sculpture sequence, known as 'Walk to Freedom', is just one of a set of dynamic land sculptures found within the Estate.



CENTRAL SQUARE
SANDTON





Six times the size of Sandton, the 2000 acre property retains nearly half as parkland and forest. The largest woodland in Johannesburg can easily be described as an indigenous renaissance of a million trees and fifty million ground covers. The lifestyle resort comprises residential, leisure and retail components, including an 18-hole Nicklaus-designed golf course. It's also one of the only developments in South Africa to have been designed around the needs and desires of pedestrians.

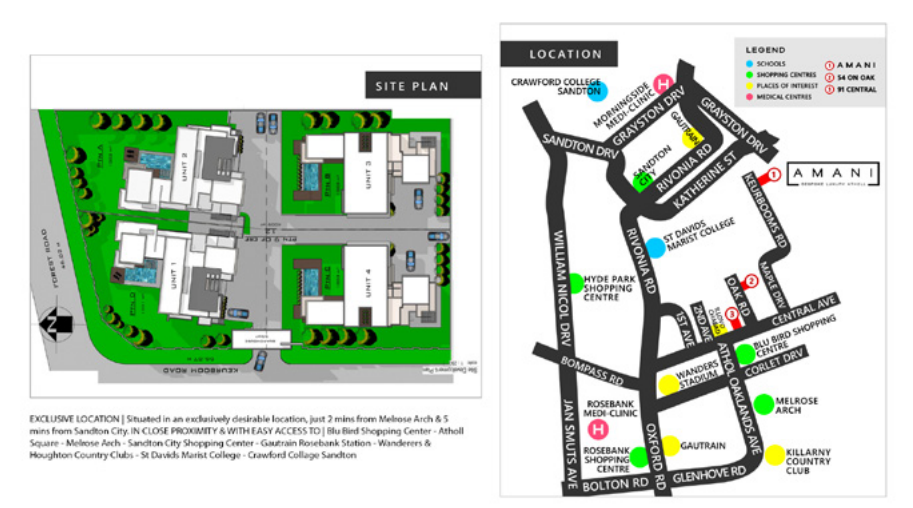
The result? A village that offers residents everything they need, without leaving the lifestyle resort. To date, more than R6bn have been invested in infrastructure both within and bordering the Lifestyle Resort.



Pedestrian highways and byways criss-cross the outdoor areas, linking residential and recreational zones and crossing parklands. In places, they follow the river course. You might sight a terrapin or two in these water surrounds, or even the green bulk of an African bullfrog. The site is designed to integrate with the rest of the resort with pedestrian pathways that weave into the 65 On Park pedestrian paths. Thick indigenous planting create natural borders between homes.

65
ON PARK

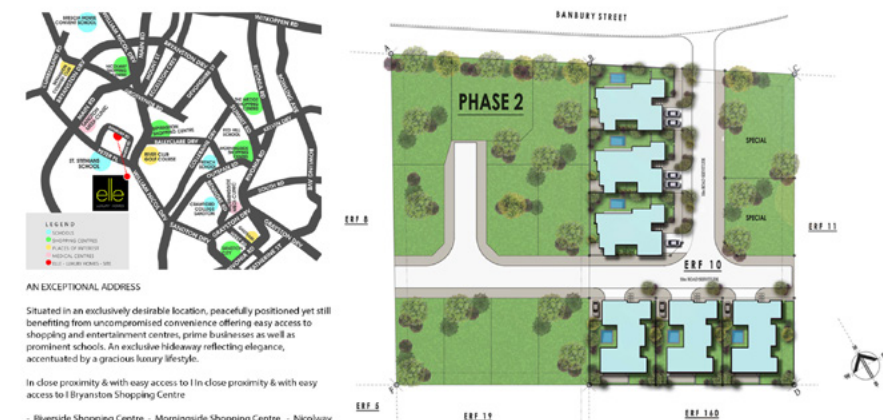
A M A N I
BESPOKE LUXURY ATHOLL



DEFINING BREATHTAKING LUXURY
Visionary bespoke homes. Captivating architecture. Exclusive location. High ceilings, generous living spaces complemented by a harmonious indoor outdoor flow. Spacious en-suite bedrooms boasting natural light and modern clean lines unifying comfort with style. Refined, Contemporary. Unique. A unique setting creating the ultimate in peace and tranquillity.



4 ARCHITECTURALLY DESIGNED HOMES ON SPACIOUS STANDS.
- Harmonious living with a seamless indoor outdoor flow
- High ceilings & floors - Designer kitchen & bathrooms
- 6/5 Luxurious bedrooms en-suite
- Sparkling pool - Double/Triples garages
- Staff rooms - Secure Estate



AN EXCEPTIONAL ADDRESS

Situated in an exclusively desirable location, peacefully positioned yet still benefiting from uncompromised convenience offering easy access to shopping and entertainment centres, prime businesses as well as prominent schools. An exclusive hideaway reflecting elegance, accentuated by a gracious luxury lifestyle.

In close proximity & with easy access to:

- Riverside Shopping Centre
- Morningside Shopping Centre
- Nicolway Shopping Centre
- Sandton City Shopping Centre
- Sandton Medi-Clinic
- Morningside Medi-Clinic
- Bryanston Country Club
- River Club Golf Course



DISCOVER ELEGANCE

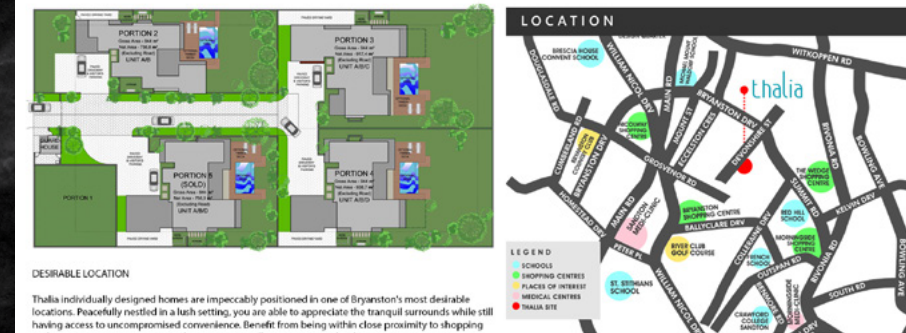
Discover a passion for exquisite living. Elle - Luxury Homes have been designed with a heightened appreciation for elegance and poise, unifying unsurpassed comfort with a dynamic use of open space. Lush gardens surround the glittering pool and an unrivalled union of warmth and light create a blissful atmosphere you can call home.



DISCOVER PERFECTION

Expertly conceived with every detail masterfully implemented, these unique homes are a creation unto themselves. Adorned with contemporary finishes, angular architecture and seamlessly integrated living spaces. Discover your ideal sanctuary through an impeccably crafted indoor outdoor harmony. Elle - Luxury Homes are the epitome of effortless sophistication.

elle
LUXURY HOMES
BRYANSTON



DESIRABLE LOCATION

Thalia individually designed homes are impeccably positioned in one of Bryanston's most desirable locations. Peacefully nestled in a lush setting, you are able to appreciate the tranquil surrounds while still having access to uncompromised convenience, benefit from being within close proximity to shopping and entertainment centres, prime businesses as well as prominent schools.

In close proximity & with easy access to:

- Morningside Shopping Centre
- Morningside Medi-Clinic
- Sandton City Shopping Centre
- Sandton Medi-Clinic
- Bryanston Shopping Centre
- Nicolway Shopping Centre
- Bryanston Country Club
- River Club Golf Course
- Diverse group of schools



INSPIRE THE EXCEPTIONAL

Beautifully appointed homes on large stands boasting pristine living spaces and a natural integration of outdoor warmth and light. Appreciate inspiring views yet remain comfortably private. Thalia luxury homes are unprecedented in their bespoke lifestyle offerings. Sophisticated design & superior quality is apparent in every detail, making these homes the perfect fusion of family comfort and elegance, complimented by the finest finishes.



INSPIRE THE EXCEPTIONAL

- 4 exclusive homes on large stands
- Harmonious living spaces with a seamless indoor outdoor flow
- Designer kitchen & bathrooms
- 4/5 luxurious bedrooms en-suite
- Sparkling pool
- Double garage
- Staff rooms
- Secure Estate

thalia



OPTIMA Projects

295 Samantha Street
Strijdom Park
Randburg
P.O. Box 992
Ferndale
2060

Tel +27 (0) 11 792 1216/7
Fax +27 (0) 11 791 0426

Email: info@optimakitchens.co.za

www.optimakitchens.co.za